

SOL News



Vol 8N - Aug 2010

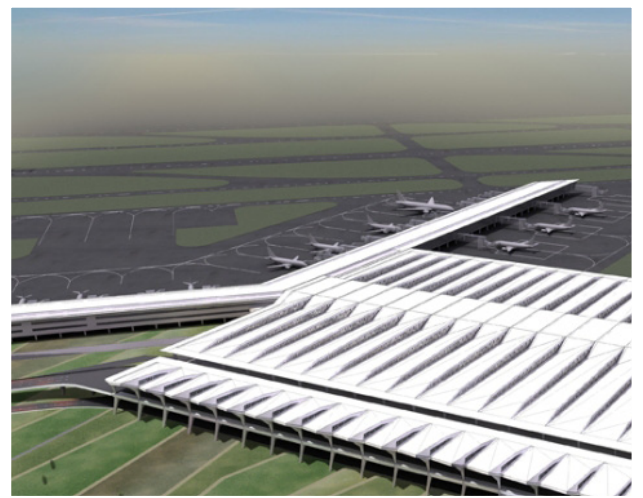


Assuranz



jatra

Indira Gandhi International Airport, New Delhi saw inauguration of Terminal 3 on July 3, 2010 .



The eight largest terminal in the world

boasts of 34 mn passenger capacity in 5.5 mn sq ft of area.

It has 168 check in counters and 78 aerobridges. T3 has 95 immigration counters, 6.4 Kms. of conveyor belts. T 3



has integrated hotel, retail and entertainment space of 20,000 sq mtrs.

Whilst these facts are highlighted and displayed, we would like

to bring to your attention that **T3 also has 28 sets of Solpower solar water heating systems**, a feat

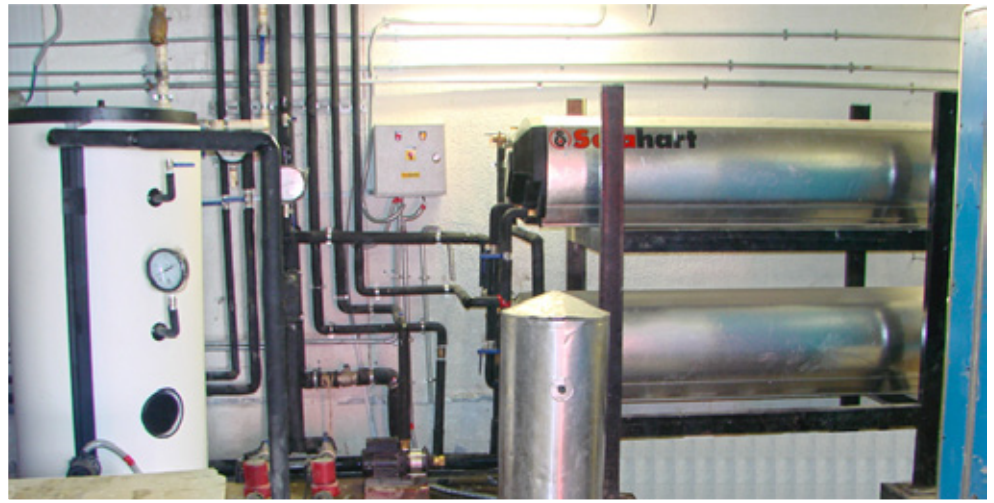


which most of the major airports in the world cannot boast of.



The designers and planners had the vision to integrate and offer solar water heating systems for the hot water requirement at the terminal. It was not a simple task keeping in mind the logistics.

Solpower - Uria Pak offered an innovative solution. A



combination of unglazed solar collectors on the roof with Solahart storage tanks as heat exchangers with drain down system provided a perfect solution. This heat exchange system is saving energy for Terminal 3 and makes it one the few Eco friendly Airports in the world.

Happy Independence Day